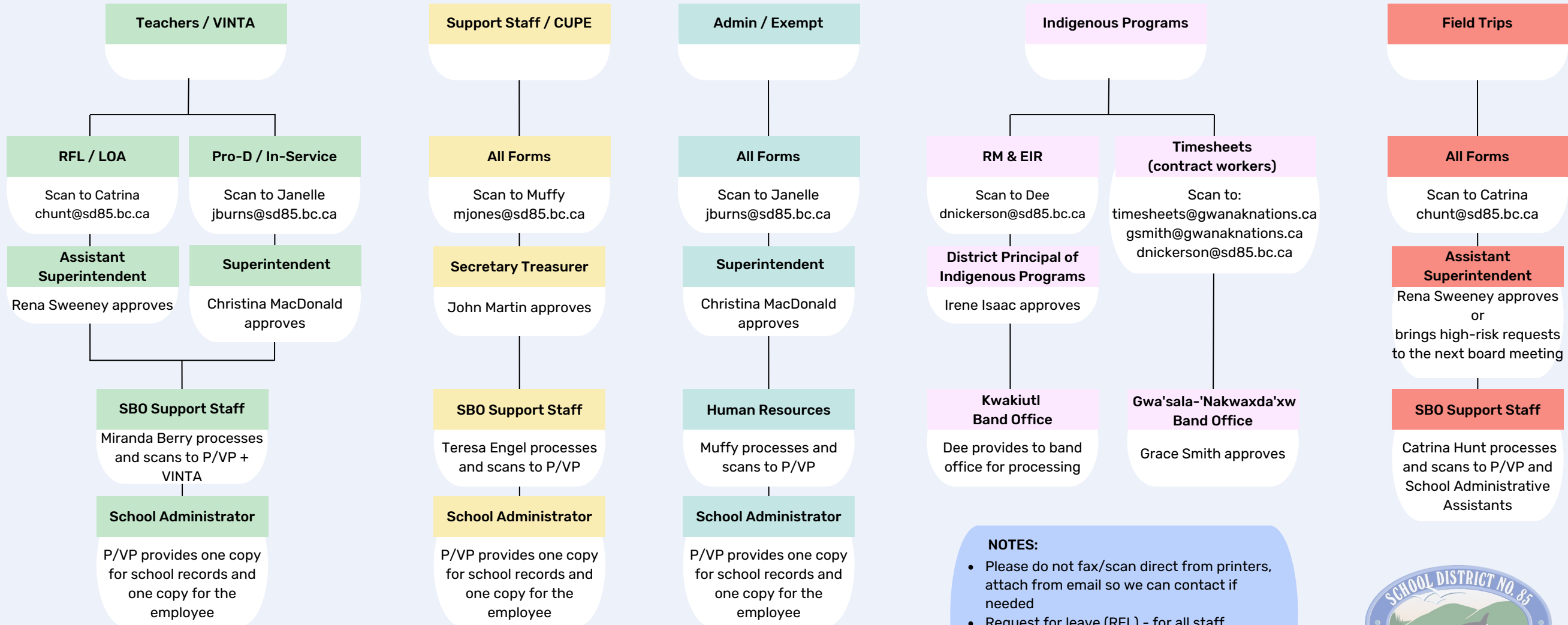


SD85 FORMS FLOW CHART

All forms must be signed or initialed by administrator before submitting to the board office



- NOTES:**
- Please do not fax/scan direct from printers, attach from email so we can contact if needed
 - Request for leave (RFL) - for all staff
 - In-Service - for all staff
 - VINTA Pro-D - for teacher only
 - Role Model & Elder in Residence (RM & EIR)

