

## School District 85



**Alert Bay Elementary School  
381 Larch Street, Alert Bay, BC  
Asbestos Management Inventory**



**North West  
Environmental Group Ltd.**

NWest File: 39957 AMI1 V1.0  
Date Issued: November 10, 2020

### Report Information

Client Name:	School District 85
Contact:	Darby Gildersleeve
Issued on:	November 10, 2020
NWest File Number:	39957 AMI1 V1.0
NWest Primary Contact:	Daniel Morton

### Version Log

Version	Description	Authorized By	Date
V1.0	Alert Bay Elementary School AMI	Joel Shandro	November 10, 2020

### Document Sign-Off



Joel Shandro, B.Sc.  
Senior Project Manager  
Qualified Person as per OHS Regulation 6.1  
Review



Daniel Morton, B.Sc., PMP, CVI  
Project Manager  
Qualified Person as per OHS Regulation 6.1  
Review



Paddy Greig, B.Sc.  
Occupational Hygiene Technician  
Author

### Confidentiality and Copyright

This document is for the sole use of the addressee and North West Environmental Group Ltd. (NWest). The document contains confidential information that shall not be reproduced in any manner or disclosed to or discussed with any other parties without the express written permission of NWest. Information in this document is to be considered the intellectual property of NWest in accordance with Canadian copyright law.

This report was prepared by NWest for the account of the above-noted client. The material herein reflects NWest's best judgement, in the light of the information available at the time of preparation. Any third-party use of this report, or any reliance on, or decisions made based on it, are the responsibility of such third parties. NWest accepts no responsibility for damage, if any, suffered by any third party as a result of decisions made or action based on this report.

## Table of Contents

Table of Contents .....	ii
1 Introduction .....	1
2 Scope of Work and Exclusions .....	1
3 Regulatory Framework.....	2
4 Facility Description.....	2
5 Asbestos Management Inventory and Recommendations.....	3
6 General Recommendations .....	7
Appendix A. Photo Plates.....	8
Appendix B. Analytical Reports.....	12
Appendix C. Sample Location Drawings.....	13
Appendix D. Regulatory Framework.....	14
Appendix E. Methodology.....	15
Appendix F. Evaluation of Asbestos-Containing Materials .....	16

## 1 Introduction

North West Environmental Group Ltd. (NWest) was retained by School District 85 (the Client) to conduct an asbestos management inventory (AMI) at Alert Bay Elementary School located at 381 Larch Street, Alert Bay, BC (site). The non-destructive assessment was conducted by NWest representatives, Luke Kozlowski and Paddy Greig on August 20, 2020.

The purpose of this assessment is to provide information regarding the presence and condition of asbestos and suspect asbestos containing building materials in the building structure(s) on site. This inventory assessment involved the identification of asbestos containing materials and a condition assessment in support of the building owner/manager's regular monitoring of asbestos containing material conditions so that materials in good condition may be safely managed in place until they are removed, and damaged materials can be repaired or otherwise addressed in a timely manner. Regular inspections of asbestos containing building materials are required to mitigate the potential for occupant and worker exposure. This report may be used for day to day building maintenance activities involving minor disturbance of materials catalogued.

This assessment supports compliance with the following provincial legislation:

- ) BC Workers Compensation Act – Part 2, Division 4 (General Duties of Employers, Workers and Others), Section 25 (General duties of owner).
- ) BC Occupational Health and Safety Regulation – Part 6.4 (Asbestos-General Requirements, Inventory).

This asbestos management inventory assessment does not replace the requirement for the owner to undertake a pre-renovation or pre-demolition project-specific hazardous materials assessment as required by the BC Occupational Health and Safety Regulation section 20.112.

Note: ongoing repairs, maintenance, and renovations may result in some changes to the building after this report was printed.

## 2 Scope of Work and Exclusions

All accessible areas of the facility were included in this assessment. Whenever practicable, representative building material samples were collected for asbestos analysis. See Appendix E for assessment methodologies.

This assessment was non-destructive (e.g., inspection holes to assess otherwise intact systems such as wall cavities were not made) and non-invasive (e.g., assessment of cupboards, closets, and similar personal spaces were not undertaken; ceiling tiles were not removed to assess above-ceiling materials). As such, concealed asbestos containing materials may be present.

The following NWest historical data and information is included herein:

- ) NWest project number 29999, "Asbestos Inventory and Condition Assessment Alert Bay Elementary School", issued November 10, 2016.

Areas/systems not included in the assessment are summarised in the following table.

**Table 2-1. Assessment Exclusions**

Area/System	Rationale
Attic	Non-destructive assessment
Wall/ceiling cavities	Non-destructive assessment
Concrete block walls	No concrete blocks present
Equipment/System	Outside assessment scope of work
Underground/buried equipment and systems	Outside assessment scope of work
Indoor air quality assessment	Outside assessment scope of work
Contents	Outside assessment scope of work

### 3 Regulatory Framework

The methods used for assessment, sample collection, and analysis were in accordance with applicable regulations and are acceptable to WorkSafeBC. See Appendix D for details on the applicable regulatory framework and additional standards that apply to this project.

### 4 Facility Description

The following is a summary of the building. Area calculations are approximate.

**Table 4-1. Building Summary**

Building System	Details
Construction date	Original construction: 1954 Renovation/Addition(s): 2009
Renovation date(s) and description(s)	Extent of 2009 renovation unknown
Number of floors/levels	1
Area	17,653 ft <sup>2</sup>
<b>Exterior Materials</b>	
Roofing	Torch-On asphalt
Exterior	Wood, metal and Hardie Board
<b>Interior Materials</b>	
Ceiling	Acoustic ceiling tiles, drywall
Walls	Wood panels, drywall, wood, and ceramic tile
Floors	Sheet flooring, carpet and wood
Insulation	Fibreglass
HVAC (system type and insulation type)	Electric with redundant boiler system
Lighting	Fluorescent

**5 Asbestos Management Inventory and Recommendations**

This section summarises the observations made, and the analytical results for material samples collected during the site assessment. Photo plates are presented in Appendix A, analytical laboratory reports are included in Appendix B, and drawings showing sample locations are presented in Appendix C.

The following table summarizes the results of the inventory, condition assessment, and recommended management actions for known and suspect ACMs. The recommendations are derived by the friability, accessibility, and condition of the ACMs (See Appendix F). Quantities are estimated.

**Table 5-1. Asbestos-Containing Materials Summary**

Description	System	Locations	Status	Quantity	Accessibility	Friability	Condition	Mgmt Recommendation
Drywall joint compound	Wall	Entry to Library, Library	Confirmed	1600 ft <sup>2</sup>	Access A	Non-friable	Good	Action 5 – Proactive ACM removal / Action 7 – Routinely monitor condition Test prior to impact
Drywall joint compound	Wall	Boiler Room	Confirmed	550 ft <sup>2</sup>	Access B	Non-friable	Poor	Action 3 – ACM Removal Required for Compliance
Drywall joint compound	Ceiling	Classrooms: 1, 2, 3, 4, 5, 6. Staff Lunch Room, Chair Storage	Confirmed	900 ft <sup>2</sup>	Access A	Non-friable	Good	Action 5 – Proactive ACM removal / Action 7 – Routinely monitor condition Test prior to impact
Drywall joint compound	Ceiling	Boiler Room	Confirmed	415 ft <sup>2</sup>	Access B	Non-friable	Poor	Action 3 – ACM Removal Required for Compliance
Boiler refractory	Boiler	Boiler Room	Suspect	2 Boiler Units	Access B	Non friable	Good	Action 5 – Proactive ACM removal / Action 7 – Routinely monitor condition Test prior to impact
Brick and mortar	Chimney	Boiler Room	Suspect	100 ft <sup>2</sup>	Access B	Non friable	Fair	Action 5 – Proactive ACM removal / Action 7 – Routinely monitor condition Test prior to impact
Caulking type 1 – Grey	Ducting	Classrooms: 1, 2, 3, 4, 5, 6. Staff Lunch Room	Suspect	Concealed. Assumed on ducting throughout building	Access C(c)	Non-friable	Good	Action 5 – Proactive ACM removal / Action 7 – Routinely monitor condition Test prior to impact
Mastic type 1 – Silver on sink	Sink	Classroom 2, Medical Room, Staff Kitchen, Staff Lunch Room.	Confirmed	5 Sinks	Access A	Non-friable	Good	Action 5 – Proactive ACM removal / Action 7 – Routinely monitor condition Test prior to impact



**Warning:** in the event any additional suspect materials are encountered during renovation/repair activities, work on those materials should stop immediately and remain undisturbed until testing confirms the presence or absence of asbestos or other hazardous material

Description	System	Locations	Status	Quantity	Accessibility	Friability	Condition	Mgmt Recommendation
Mastic type 2 – Black around windows and doors	Building Seal	Exterior windows and doors	Suspect	All exterior windows and doors	Access A	Non-friable	Good	Action 5 – Proactive ACM removal / Action 7 – Routinely monitor condition Test prior to impact
Window putty – Black	Window Seal	Classrooms: 2, 4, 5, 6. Washrooms: Boy’s and Girl’s Staff Lunch Room	Suspect	All windows in listed locations.	Access A	Non-friable	Good	Action 5 – Proactive ACM removal / Action 7 – Routinely monitor condition Test prior to impact
Chairs	Chair	Library and Storage Room	Suspect	6	Access A	Non-friable	Good	Action 5 – Proactive ACM removal / Action 7 – Routinely monitor condition Test prior to impact
Bell and spigot pipe joint	Rain leader	Exterior	Suspect	1 Pipe Joint	Access A	Non-friable	Good	Action 5 – Proactive ACM removal / Action 7 – Routinely monitor condition Test prior to impact
Fire door	Door	Boiler Room	Suspect	1 Door	Access A	Non-friable	Good	Action 5 – Proactive ACM removal / Action 7 – Routinely monitor condition Test prior to impact
Acoustic ceiling tile type 1 - Patterned fissures small and large pinhole	Ceiling	Library, Entry to Library, Gym Kitchen, Gym Storage	Suspect	570, 160, 160, 1800	Access A	Friable	Good	Action 5 – Proactive ACM removal / Action 7 – Routinely monitor condition Test prior to impact
Acoustic Ceiling Tile Type 3 - 12" x 12" Donnacona (Textured)	Ceiling	Gym Storage by Bleachers, Storage Room	Suspect	775 ft <sup>2</sup>	Access A	Friable	Good	Action 5 – Proactive ACM removal / Action 7 – Routinely monitor condition Test prior to impact
Acoustic panels	Wall	Gym	Suspect	2000 ft <sup>2</sup>	Access A	Friable	Good	Action 5 – Proactive ACM removal / Action 7 – Routinely monitor condition Test prior to impact
Torch-on roofing	Roof	Building Roof	Suspect	17,653 ft <sup>2</sup>	Access B	Non-friable	Good	Action 5 – Proactive ACM removal / Action 7 – Routinely monitor condition Test prior to impact
Beige ceramic with white tile grout and thinset	Wall	Washrooms: Boy’s and Girl’s Staff Washrooms: Male and Female	Suspect	900 ft <sup>2</sup>	Access A	Non-friable	Good	Action 5 – Proactive ACM removal / Action 7 – Routinely monitor condition Test prior to impact



**Warning:** in the event any additional suspect materials are encountered during renovation/repair activities, work on those materials should stop immediately and remain undisturbed until testing confirms the presence or absence of asbestos or other hazardous material

Description	System	Locations	Status	Quantity	Accessibility	Friability	Condition	Mgmt Recommendation
Adhesive type 1 – Baseboard adhesive	Baseboard	Throughout Building	Suspect	Throughout building	Access A	Non-friable	Good	Action 5 – Proactive ACM removal / Action 7 – Routinely monitor condition Test prior to impact

Note: asbestos-containing materials may be present in concealed or excluded locations and/or systems. See Section 2 of this report.

Materials suspected to contain asbestos which are often concealed in buildings and require destructive assessment to evaluate may be present which include, but are not limited to:

- ) Electrical wiring and cables
- ) Buried asbestos cement pipes
- ) Formed cement products
- ) Bell and spigot piping gaskets
- ) Incandescent light fixtures (heat shields)
- ) Floor leveling compound
- ) Vermiculite in attics, and ceiling, wall, and floor cavities including concrete block void spaces
- ) Penetration caulking and/or parging

A summary of materials known or presumed not to contain asbestos is presented as follows:

**Table 5-2. Non-Asbestos-Containing Materials**

Location(s)	Material Description	Sample Quantity	Comments
Gym Kitchen	Mastic type 2 – Grey on sink	1	None
Classrooms: 2, 5, 6. Classroom Hallway, Entry to Library, Gym, Gym Kitchen, Library, Staff Kitchen, Staff Lunch Room	Sheet flooring type 1 – Gray and black speckled	1	None
Classrooms: 1, 2, 3, 4, 5, 6. Washrooms: Boy’s and Girl’s Staff Washrooms: Male and Female Electrical Room, Janitor Room, Medical Room, Staff Lunch Room	Sheet flooring type 2 – Yellow	1	None
Gym Storage, Gym Stage	Sheet flooring type 3 – Beige with black smears	1	None
Classroom 4	Sheet flooring type 4 – Gray and white speckled	0	Installed after 2016 assessment
Janitor Room, Janitor Room Crawl Space	Pipe insulation type 1 – Fibreglass	0	Visually confirmed to be Fibreglass



**Warning:** in the event any additional suspect materials are encountered during renovation/repair activities, work on those materials should stop immediately and remain undisturbed until testing confirms the presence or absence of asbestos or other hazardous material

Location(s)	Material Description	Sample Quantity	Comments
Library	Acoustic ceiling tile type 2 - 12" x 12" Donnacona fibreboard	1	Wood fibre ceiling tile
Gym, Gym Stage	Acoustic ceiling tile type 4 - 12"x24" Donnacona	1	Wood fibre ceiling tile
Classrooms: 1, 2, 3, 4, 5, 6. Medical Room, Office, Copier Room, Principal Office, Resource Room, Staff Kitchen, Staff Lunch Room	Acoustic ceiling tile type 5 - Trailer type fibre tiles	0	Wood fibre ceiling tile
Classrooms: 1, 2, 3, 4, 5, 6. Washrooms: Boy's and Girl's Staff Washrooms: Male and Female Classroom Hallway, Electrical Room, Gym Kitchen, Storage on Stage, , Janitor Room, Medical Room, Office, Copier Room, Principal Office, Resource Room, Staff Kitchen, Staff Lunch Room	Drywall with no joint compound	0	Partitioned drywall with no joint compound does not contain asbestos

Materials assumed not to contain asbestos include:

- ) post-1990 construction materials with the exception of formed cement products, vermiculite, fire stop caulking, gaskets.
- ) wood and wood composite materials
- ) carpet
- ) plastics in non-industrial applications
- ) metals
- ) glazing
- ) exterior below-grade drainage and plumbing systems
- ) ceramic tile, excluding adhesives, grout, and thinset mortar



**Warning:** in the event any additional suspect materials are encountered during renovation/repair activities, work on those materials should stop immediately and remain undisturbed until testing confirms the presence or absence of asbestos or other hazardous material

## 6 General Recommendations

Based on observations made and analytical results, NWest makes the following recommendations.

1. Ensure that the inventory is kept current with respect to presence and condition of asbestos-containing materials, and a record is kept of any changes made to the inventory.
2. Retain a current version of the inventory until all the asbestos-containing materials are removed from the Site.
3. Ensure that a copy of the current version of the inventory is readily available at the Site.
4. Ensure that all asbestos-containing materials present at the Site are identified by signs, labels or, when these are not practicable, other effective means.
5. A qualified person must undertake a pre-renovation/demolition project-specific hazardous materials assessment prior to planned work other than minor maintenance activities that impacts building materials or systems that conforms to the requirements of the BC Occupational Health and Safety Regulation section 20.112. A qualified person must complete a risk assessment and safe work procedures for all hazardous materials that may be impacted by maintenance and/or renovation work. Removal or disturbance of hazardous materials must be undertaken by a qualified contractor employing WorkSafeBC-approved procedures.
6. Maintenance work must STOP if previously unidentified suspected hazardous materials are encountered or inadvertently damaged or disturbed during maintenance activities. These suspect materials must be left undisturbed until a qualified person has determined the status of the material.
7. Damage to asbestos-containing materials must be repaired or otherwise rendered non-hazardous to unprotected workers and occupants without delay (e.g. enclose damaged materials with a dust barrier).

**Appendix A. Photo Plates**

The following photo plates provide a general documentation of the building materials that were sampled and analyzed, and observations made during the assessment. They are meant to summarize the results of analysis and observations and are not intended to include all hazardous materials, or their locations, observed during the assessment.



Photo 1  
Description: Drywall Joint Compound  
Location: Boiler Room  
**Asbestos: 1.7% Chrysotile**  
Sample(s): 39999-5



Photo 2  
Description: Mastic Type 1 – Silver on Sink  
Location: Medical Room  
**Asbestos: 1.5% Chrysotile**  
Sample(s): 39957-16



Photo 3  
Description: Window Putty – Black  
Location: Classroom 4  
**Asbestos: Suspect**



Photo 4  
Description: Mastic Type 2 – Black Around Windows and Doors  
Location: Exterior  
**Asbestos: Suspect**



Photo 5  
Description: Acoustic Ceiling Tile Type 3 - 12" x 12" Donnacona (Textured)  
Location: Storage Room  
**Asbestos: Suspect**



Photo 6  
Description: Acoustic Panels (Gym Upper Wall)  
Location: Gym  
**Asbestos: Suspect**



Photo 7  
Description: Adhesive Type 1 - Baseboard Adhesive  
Location: Staff Lunch Room  
**Asbestos: Suspect**



Photo 8  
Description: Caulking Type 1 - Grey (On Ducting)  
Location: Classroom 3  
**Asbestos: Suspect**



Photo 9  
Description: Boiler Refractory  
Location: Boiler Room  
**Asbestos: Suspect**



Photo 10  
Description: Beige Ceramic Tile with White Grout and Thinset  
Location: Male Staff Washroom  
**Asbestos: Suspect concealed asbestos leveling compound(s)**



Photo 5  
Description: Chair  
Location: Library  
**Asbestos: Suspect**



Photo 6  
Description: Fire Door  
Location: Boiler Room  
**Asbestos: Suspect**



Photo 5

Description: Brick and Mortar

Location: Boiler Room

**Asbestos:** **Suspect**

**Appendix B. Analytical Reports**



**Warning:** in the event any additional suspect materials are encountered during renovation/repair activities, work on those materials should stop immediately and remain undisturbed until testing confirms the presence or absence of asbestos or other hazardous material

## Bulk Sample Report

### Asbestos Analysis of Bulk Materials using Polarized Light Microscopy

**Client:** School District 85 - Vancouver Island North

**Date:** September 15, 2016

**Contractor:** School District 85 - Vancouver Island North

**Client Job or PO#:**

**Project:** Alert Bay Elementary AB Inventory

**Project number:** 29999

Sample No	Location	Date Analysed	Analyst	Client Description	Phase	%	Asbestos	%	Other Materials	%	Comments
29999-1	Library	Sep-09-2016	IATL	Ceiling Tile (Acoustic) - ACT1 - Patterned Fissure Small and Large Pinholes	Tan	100	None Detected	0	Cellulose (40%) Glass (15%) Non-Fibrous (45%)	100	
29999-2	Library	Sep-09-2016	IATL	Ceiling Tile (Acoustic) - Donnacona Fibre Board 12"x12"	Dk Tan	100	None Detected	0	Cellulose	100	
29999-3 Layer 1	Library	Sep-09-2016	IATL	Sheet Flooring - SF1- Gray and Black Speckled	White	33	None Detected	0	Cellulose (1%) Non-Fibrous (99%)	100	
29999-3 Layer 2	Library	Sep-09-2016	IATL	Sheet Flooring - SF1- Gray and Black Speckled	Tan	33	None Detected	0	Non-Fibrous	100	
29999-3 Layer 3	Library	Sep-09-2016	IATL	Sheet Flooring - SF1- Gray and Black Speckled	Tan Wood	33	None Detected	0	Cellulose	100	
29999-4	Storage Room	Sep-09-2016	IATL	Ceiling Tile (Acoustic) - ACT 3 12x12 Donnacona Tile (Textured)	Dk Tan	100	None Detected	0	Cellulose	100	
29999-5 Layer 1	Boiler Room	Sep-09-2016	IATL	Drywall Joint Compound - White Cementitious	Off-White	50	<b>Chrysotile</b>	<b>1.7</b>	Non-Fibrous	98.3	
29999-5 Layer 2	Boiler Room	Sep-09-2016	IATL	Drywall Joint Compound - White Cementitious	Silver Paint	50	<b>Chrysotile</b>	<b>0.25</b>	Non-Fibrous	99.7 5	

Note: Samples were analyzed by method: EPA/600/R-93/116" Bulk Asbestos Analysis by Polarized Light Microscopy". For heterogenous materials the concentration may vary. No reproduction without permission.

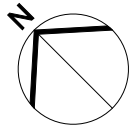
Sample No	Location	Date Analysed	Analyst	Client Description	Phase	%	Asbestos	%	Other Materials	%	Comments
29999-6	Gym	Sep-09-2016	IATL	Other - Acoustic Panels (Upper Wall)	Lt Tan	100	None Detected	0	Cellulose (20%) Non-Fibrous (80%)	100	
29999-7	Gym Storage	Sep-09-2016	IATL	Sheet Flooring - SF3- Beige with Black Smears	Lt Tan	100	None Detected	0	Cellulose (2%) Non-Fibrous (98%)	100	
29999-8	Gym-Stage (including chair storage)	Sep-09-2016	IATL	Drywall Joint Compound - White Cementitious	White	100	None Detected	0	Non-Fibrous	100	
29999-9	Gym-Storage by Bleachers	Sep-09-2016	IATL	Ceiling Tile (Acoustic) - ACT 3 1x2 Donnacona Tile (Textured)	Dk Tan	100	None Detected	0	Cellulose (99%) Non-Fibrous (1%)	100	
29999-10	Gym Kitchen	Sep-09-2016	IATL	Other - Sink Acoustical Insulation	Grey	100	None Detected	0	Non-Fibrous	100	
29999-11	Entry to Library	Sep-09-2016	IATL	Drywall Joint Compound - White Cementitious	White	100	None Detected	0	Non-Fibrous	100	
29999-12	Entry to Library	Sep-09-2016	IATL	Adhesive - Baseboard Adhesive	Tan Mastic	100	None Detected	0	Non-Fibrous	100	
29999-13	Classroom 6	Sep-09-2016	IATL	Sheet Flooring - SF2- Yellow	Lt Tan	100	None Detected	0	Non-Fibrous	100	
29999-14	Classroom 6	Sep-09-2016	IATL	Duct Caulking Gray	Grey	100	None Detected	0	Non-Fibrous	100	
29999-15	Exterior	Sep-09-2016	IATL	Caulking - Door Caulking	Grey Caulk	100	None Detected	0	Non-Fibrous	100	
29999-16	Med Room	Sep-09-2016	IATL	Mastic - Sink Acoustical Insulation	Silver Mastic	100	<b>Chrysotile</b>	<b>1.5</b>	Non-Fibrous	98.5	
29999-17	Classroom 6	Sep-09-2016	IATL	Drywall Joint Compound - White Cementitious	White	100	None Detected	0	Non-Fibrous	100	

Note: Samples were analyzed by method: EPA/600/R-93/116" Bulk Asbestos Analysis by Polarized Light Microscopy". For heterogenous materials the concentration may vary. No reproduction without permission.

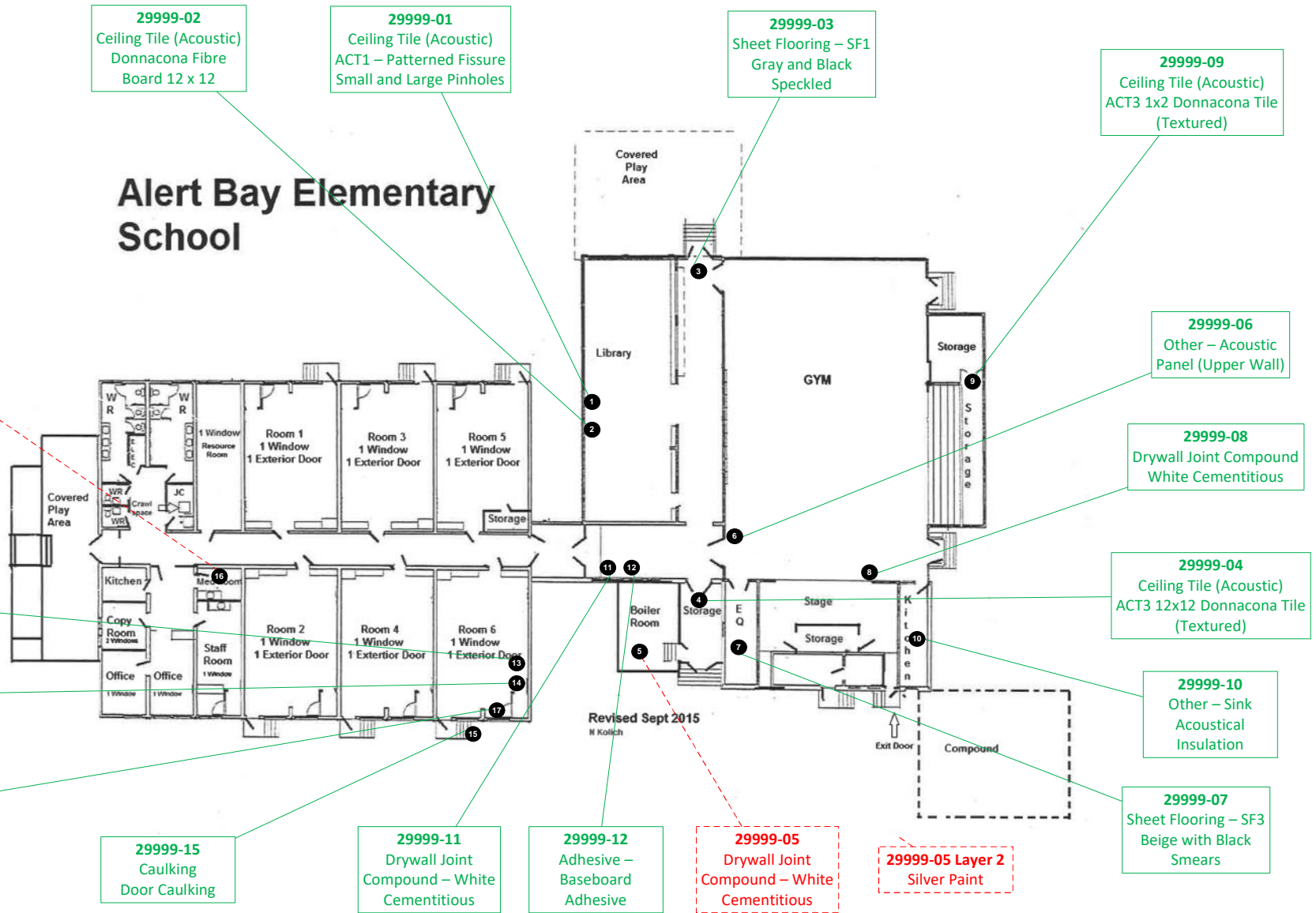
**Appendix C. Sample Location Drawings**



**Warning:** in the event any additional suspect materials are encountered during renovation/repair activities, work on those materials should stop immediately and remain undisturbed until testing confirms the presence or absence of asbestos or other hazardous material



# Alert Bay Elementary School



Drawing Not to Scale

### Sample Result Key

123 No Asbestos Detected

123 Material Contains Asbestos

123 Lead (Pb) Sample

ADDRESS/LOCATION:

Alert Bay Elementary School  
381 Larch Street, Alert Bay, BC VON 1A0

DRAWING TITLE:

School District 85

PROJECT NO.: 29999

DATE: 08/29/2016

SURVEYED BY: Julie Scott/Moncrieff/  
Bill Sullivan

DRAWING NO.: 001



**North West**  
Environmental Group Ltd.

#201-415 Gorge Road East

Victoria B.C. V8T 2W1

## Appendix D. Regulatory Framework

1. **Workers Compensation Act**, Part 2, Division 4 (General Duties of Employers, Workers and Others), Section 25 (General duties of owner).
2. **BC Occupational Health and Safety Regulation**, BC Reg. 296/97, including amendments.
3. **Safe Work Practices for Handling Asbestos**, WorkSafeBC, current edition.
4. **Hazardous Waste Regulation**, BC Ministry of Environment, including amendments.
5. **Transportation of Dangerous Goods Regulations SOR / 2008-34**, Transportation of Dangerous Goods Act, SOR/2008/34 including amendments.

## Appendix E. Methodology

The assessment adhered to applicable regulations and followed industry-accepted standards and methodologies.

**Note:** Not all of the following materials and/or methods were necessarily included in this assessment.

### Asbestos

An initial walk-through was conducted of the assessment areas for building materials and machinery or equipment to make a preliminary determination if asbestos could be present.

To confirm or discount the presence of asbestos, representative bulk samples were collected. The sample locations in the building are identified with a unique sample number. Whenever practicable, a representative number of material samples were collected as per WorkSafeBC guidance. Some materials could not be representatively sampled due to accessibility or if sample collection would damage the remaining material.

Bulk samples were submitted for analysis in accordance with the following method: EPA 600 R-93 / 116-1993. Samples consisting of greater than 0.5% asbestos were reported as an asbestos-containing material as per WorkSafeBC. See Appendix G for details on how asbestos-containing materials are evaluated to determine management actions.

Vermiculite samples were submitted for analysis in accordance with the Research Method for Sampling and Analysis of Fibrous Amphibole in Vermiculite Attic Insulation (EPA/600/R-04/004, January 2004, US EPA.) Samples of loose fill vermiculite insulation found to contain any trace of asbestos were reported as

## Appendix F. Evaluation of Asbestos-Containing Materials

Evaluation of asbestos-containing materials (ACMs) is based on the condition of the material, its accessibility, and its friability. The following are guidelines used to evaluate ACMs and the action, if any, required to safely manage them.

### Spray Applied Fireproofing, Insulation and Texture Finishes

In evaluating the condition of ACM spray applied as fireproofing, thermal insulation or texture, decorative or acoustic finishes, the following criteria apply.

<b>GOOD</b>	Surface of material shows no significant signs of damage, deterioration or delamination. Up to one percent visible damage to surface is allowed within range of GOOD. Evaluation of sprayed fireproofing requires the assessor to be familiar with the irregular surface texture typical of sprayed asbestos products. GOOD condition includes un-encapsulated or unpainted fireproofing or texture finishes, where no delamination or damage is observed, and encapsulated fireproofing or texture finishes where the encapsulation has been applied after the damage or fallout occurred.
<b>POOR</b>	Sprayed materials show signs of damage, delamination or deterioration. More than one percent damage to surface of ACM spray.
<b>DEBRIS</b>	Spray materials are dislodged from surface application source. The identified debris is noted as being separated from the original source.

### Mechanical Insulation

In evaluating the condition of mechanical insulation (on boilers, breeching, ductwork, piping, tanks, equipment etc.) the following criteria are used.

<b>GOOD</b>	Insulation is completely covered in jacketing and exhibits no evidence of damage or deterioration. No insulation is exposed. Includes conditions where the jacketing has minor surface damage (i.e., scuffs or stains), but the jacketing is not penetrated.
<b>FAIR</b>	Minor penetration damage to jacketed insulation (cuts, tears, nicks, deterioration or delamination) or undamaged insulation that has never been jacketed. Insulation is exposed but not showing surface disintegration. The extent of missing insulation should be minor to none.
<b>POOR</b>	Original insulation jacket is missing, damaged, deteriorated or delaminated. Insulation is exposed and significant areas have been dislodged. Damage cannot be readily repaired.
<b>DEBRIS</b>	Insulation materials are dislodged from surface application source. The identified debris is noted as being separated from the original source.

### Non-Friable and Potentially Friable Materials

Non-friable materials generally have little potential to release airborne fibres, even when damaged by mechanical breakage. However, some non-friable materials, i.e., exterior asbestos concrete products, may have deteriorated so that the binder no longer effectively contains the asbestos fibres. In such cases of significantly deteriorated non-friable material, the material will be treated as a friable product.

### Accessibility

The accessibility of building materials known or suspect of being ACM is rated according to the following criteria.

<b>Access (A)</b>	Areas of the building within reach (from floor level) of all building users. Includes areas such as gymnasiums, workshops, and storage areas where activities of the building users may result in disturbance of ACM not normally within reach from floor level.
-------------------	--

<b>Access (B)</b>	Frequently entered maintenance areas within reach of maintenance staff, without need for a ladder. Includes: frequently entered pipe chases, tunnels and service areas or areas within reach from a fixed ladder or catwalk (e.g., tops of equipment, mezzanines).
<b>Access (C) Exposed</b>	Areas of the building above 2.5 metres where use of a ladder is required to reach the ACM. Only refers to ACM materials that are exposed to view, from the floor or ladder, without removing or opening other building components such as ceiling tiles, or service access doors or hatches. Does not include infrequently accessed service areas of the building.
<b>Access (C) Concealed</b>	Areas of the building which require removal of a building component including lay-in ceilings and access panels into solid ceiling systems. Includes rarely entered crawlspaces, attic spaces etc. Observations are limited to the extent visible from the access points.
<b>Access (D)</b>	Areas of the building behind inaccessible solid ceiling systems, walls, or mechanical equipment, etc., where demolition of the ceiling, wall or equipment etc., is required to reach the ACM. Evaluation of condition and extent of ACM is limited or impossible, depending on the assessor's ability to visually examine the materials in Access D.
<b>ACM in Plenum</b>	Areas of the building where air movement through open or closed air spaces or plenums can be accesses by Access X, where X is any of the Accesses A-D, inclusive.

### Action Matrix

The following Action Matrix determines what, if any, action is required to safely manage ACMs.

Access	Condition			
	Good	Fair	Poor	Debris
(A)	Action 5/7	Action 5/6	Action 3	Action 1
(B)	Action 7	Action 6/5	Action 3	Action 1
(C) Exposed	Action 7	Action 6	Action 4	Action 2
(C) Concealed	Action 7	Action 7	Action 4	Action 2
(D)	Action 7	Action 7	Action 7	Action 7
(X)	Action 5/7	Action 5/6	Action 3	Action 1

### Action Table

The following is a description of the action required to manage ACMs, based on the outcome of the evaluation.

<b>Action 1</b>	<b>Immediate Clean Up of Debris That is Likely to be Disturbed</b> Restrict access/shut off air handling system if disturbance of the ACM DEBRIS is likely, and clean up ACM DEBRIS immediately. Utilize proper asbestos procedures. This action is required for compliance with regulatory requirements.
<b>Action 2</b>	<b>Entry into Areas with ACM Debris</b> At locations where ACM DEBRIS can be isolated in lieu of removal or clean up, use appropriate means to limit entry to the area. Restrict access to the area to persons utilizing moderate risk asbestos-work precautions. The precautions will be required until the ACM DEBRIS has been cleaned up, and the source of the DEBRIS has been stabilized or removed.
<b>Action 3</b>	<b>ACM Removal Required for Compliance</b> Remove ACM for compliance with regulatory requirements. Utilize asbestos procedures appropriate to the scope of the removal work.
<b>Action 4</b>	<b>Access into Areas Where ACM is Present and Likely to be Disturbed by Access</b> Use asbestos precautions when entry or access into an area is likely to disturb the ACM. ACTION 4 must be used until the ACM is removed (Use ACTION 1 or 2 if DEBRIS is present).
<b>Action 5</b>	<b>Proactive ACM Removal</b>

	Remove ACM in lieu of repair, or at locations where the presence of asbestos in GOOD condition is not desirable.
<b>Action 6</b>	<b>ACM Repair</b> Repair ACM found in FAIR condition, and not likely to be damaged again or disturbed by normal use of the area or room. Upon completion of the repair work, treat ACM as material in GOOD condition and implement ACTION 7. If ACM is likely to be damaged or disturbed during normal use of the area or room, implement ACTION 5.
<b>Action 7</b>	<b>Routine Surveillance</b> Institute routine surveillance of the ACM. Trained workers or contractors must use appropriate asbestos precaution during disturbance of the remaining ACM.

End of report. This page intentionally left blank.

