

SD No. 85 (Vancouver Island North)

P.O. Box 90
6975 Rupert St.
Port Hardy, B.C.
V0N 2P0

250.949.6618
www.sd85.bc.ca

Student Achievement Results – 2014/2015

School District No. 85



GLOSSARY

EDI	The Early Development Instrument (EDI) is a questionnaire that measures five core areas of early child development that are known to be good predictors of adult health, education and social outcomes (physical health and well-being; language and cognitive development; social competence; emotional maturity; and communication skills & general knowledge). EDI data are collected in groups called waves. Each wave is comprised of data collected from several consecutive school years. In order to accurately measure statistically significant changes in the data over time, school districts with smaller numbers of kindergarten students participate annually. Medium and larger school districts participate less frequently.
FTE Admin/Other	Includes all staff who hold a valid certificate of qualifications or a Letter of Permission and who are employed by a Board under an Administrative Officer contract, such as Principals, Vice-Principals and Directors of Instruction, Superintendents, Assistant Superintendents, Secretary-Treasurers, Assistant Secretary-Treasurers, Trustees, and any other board employee who is excluded from a union agreement.
FTE Educational Assistants	Includes teacher assistants and child care workers.
FTE Support Staff	From 2003/2004 on, a new category called "Support Staff" was created on the Form 1530. It incorporates both the old categories "Clerical Staff" and "Other Staff". This new category is defined as follows: "120 - Support Staff includes non-excluded clerical, secretaries and clerks, and other staff such as accountants, maintenance staff, custodians, and bus drivers."
FTE Teacher	A measure equivalent to the number of teachers who work full-time in a school. Include all staff who hold a valid certificate of qualification or a Letter of Permission and who are employed by a Board to provide an educational program to students, except for Principals, Vice-Principals, Directors of Instruction, Superintendents or Assistant Superintendents.
Gr. 10 Provincial Exams	Describes the percentage of students who wrote English 10, English First Peoples 10 or Francais Langue Premiere 10 in their grade 10 year (on-time) and received a mark of 60% or more on the exam. This measure has been found to be an excellent predictor of school completion.
Post-Sec Trans	Number and percent of secondary school graduates who transitioned into a public BC post-secondary institution. Does not include students enrolled in developmental or Adult Basic Ed programs. Institutions are limited to British Columbia public post-secondary only.
Satisfaction Survey	Opinion poll questions based on percent of students in grade 12 who felt that school prepared them for work or post-sec, based on many times or all of the time responses.
Six-Year Completion	The proportion of students who graduate, with a British Columbia Certificate of Graduation or British Columbia Adult Graduation Diploma, within six years from the first time they enrol in Grade 8, adjusted for migration in and out of British Columbia. The Six-Year Completion Rate is calculated by using the percentage of students who graduate within six years from the time they enrol in Grade 8, adjusted for migration in and out of BC. A six-year rate provides students with an extra year beyond the five years required to move through Grades 8-12.
Socio-Economic Index	Results based on percent of the population in a district who are on unemployment benefits. A district is considered poor if 7% or more of its population was unemployed. They were considered rich if 6.9% or less than its population was unemployed.
Special Needs	Does not include Category P – Gifted Includes: Category A – Physically Dependent Category B – Deafblind Category C – Moderate to Profound Intellectual Disability Category D – Physical Disability / Chronic Health Impairment Category E – Visual Impairment Category F – Deaf or Hard of Hearing Category G – Autism Spectrum Disorder Category H – Intensive Behaviour Interventions / Serious Mental Illness Category K – Mild Intellectual Disability Category Q – Learning Disability (formerly Category J) Category R – Moderate Behaviour Support / Mental Illness (formerly Categories M and N)
Value-Added	A measure that examines a cohort of students who were in BC for both Grades 4 and 7. Their FSA Grade 4 Reading result of Meeting or Exceeding expectations is subtracted from their six-year completion result, thus providing a result of the value-added to their educational program since Grade 4.

ENGLISH 10 COURSE TO EXAM MARK COMPARISON

15

SD Name	School Yr	Final Mark Count	Final Mark Same Grade Count	Final Mark Same Grade %	Avg. Course %	Avg. Exam %	Course Inflation
Vancouver Island North	2004/2005	129	125	97	68	65	3
Vancouver Island North	2005/2006	165	146	88	69	68	1
Vancouver Island North	2006/2007	128	108	84	69	65	4
Vancouver Island North	2007/2008	132	123	93	68	63	5
Vancouver Island North	2008/2009	146	125	86	68	61	7
Vancouver Island North	2009/2010	115	107	93	70	69	1
Vancouver Island North	2010/2011	113	100	88	69	62	7
Vancouver Island North	2011/2012	123	109	89	69	59	10
Vancouver Island North	2012/2013	104	88	85	63	58	5
Vancouver Island North	2013/2014	83	71	86	63	63	0

Data includes English 10 and English First Peoples 10. Average course and exam results are based on the final mark count. Note that this data is not comparable to the Gr10 En Written On-Time and 60% or Better measure

WHAT WE KNOW

Learning is:

- Transformative and inspired through passionate, purposeful and engaging instruction.
- A process that requires the active support of educators, families, communities and the learners themselves.
- Both an individual and group process that honours unique ways of knowing and learning.

Engagement is:

- All students actively engaged in and enthusiastic about their learning through high quality instruction and programs.
- All staff and educational partners actively supporting student learning as the most important purpose of our collaborative work.
- A community of learners that identifies with the joy and reward of student achievement and development.

Access is:

- All students having the opportunity to meet their educational goals and aspirations in programs offered directly or facilitated by School District No. 85.
- Respect for learning paths directed by individual students and families.
- Nurturing healthy partnerships with post-secondary organizations, local business, industry, and not-for-profit organizations that enrich learning experiences and create opportunities.

This document has been created in partnership with the Ministry of Education of British Columbia, November 2014.

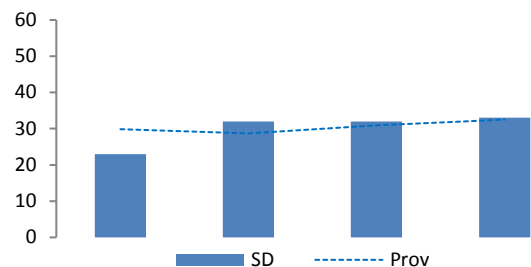


PREDICTIVE ACHIEVEMENT RESULTS OF STUDENTS (STILL IN THE K-12 Program)

School District: 85 Vancouver Island North

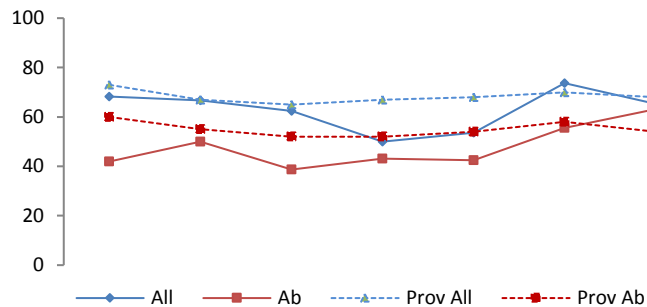
11 Early Development Indicator (EDI)

K Data Collection Yrs	% Vulnerable 1+ Domains	Probable Grade in 2014/15
2003/04-2005/06	23	9, 10, 11
2007/08-2008/09	32	6, 7
2009/10-2010/11	32	4, 5
2011/12-2012/13	33	2, 3

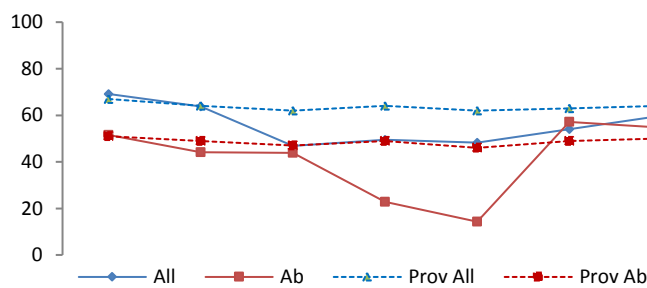


12 FSA Reading Meeting or Exceeding Expectations (%)

School Yr	All	Grade 4			Non Ab	Spec N
		Female	Male	Ab		
2007/08	68	63	72	42	80	18
2008/09	67	67	66	50	72	44
2009/10	62	68	56	39	73	33
2010/11	50	48	52	43	54	25
2011/12	54	72	37	43	60	42
2012/13	74	81	61	56	85	57
2013/14	65	78	56	63	67	63



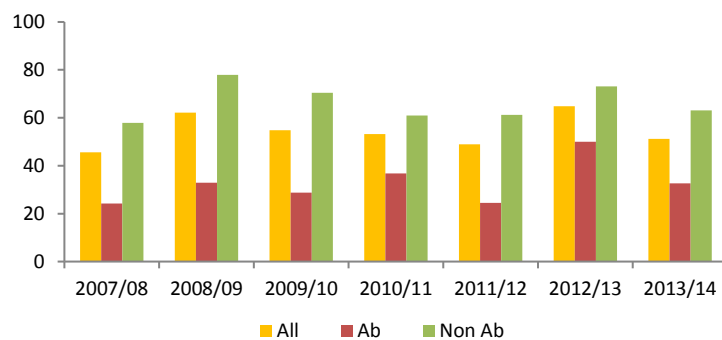
School Yr	All	Grade 7			Non Ab	Spec N
		Female	Male	Ab		
2007/08	69	67	71	52	76	45
2008/09	64	73	57	44	74	44
2009/10	47	54	41	44	49	25
2010/11	50	49	50	23	63	20
2011/12	48	56	38	14	59	0
2012/13	54	60	49	57	53	31
2013/14	60	62	58	55	63	38



13 Gr10 English Exam* Written On-Time & 60% or Better (%)

School Yr	All	Ab	Non Ab
2007/08	46	24	58
2008/09	62	33	78
2009/10	55	29	70
2010/11	53	37	61
2011/12	49	24	61
2012/13	65	50	73
2013/14	51	33	63

Data analysis indicates that almost 100% of students who write the En10 exam on-time & receive 60% or more graduate.



14 Student Cohort Summaries from EDI to Graduation (% All Students)

	Sch Yr	%	Sch Yr	%	Sch Yr	%	Sch Yr	%	Sch Yr	%	Sch Yr	%	Sch Yr	%	Sch Yr	%
EDI	00/01	-	01/02	-	02/03	-	03/04	23	04/05	23	05/06	23	06/07	-	07/08	32
FSA Re4	04/05	69	05/06	67	06/07	55	07/08	68	08/09	67	09/10	62	10/11	50	11/12	54
FSA Re7	07/08	69	08/09	64	09/10	47	10/11	50	11/12	48	12/13	54	13/14	60	14/15	-
G10 En Ex	10/11	53	11/12	49	12/13	65	13/14	51	14/15	-	15/16	-	16/17	-	17/18	-
G12 En Ex	12/13	53	13/14	52	14/15	-	15/16	-	16/17	-	17/18	-	18/19	-	19/20	-
6-Yr Comp	13/14	74	14/15	-	15/16	-	16/17	-	17/18	-	18/19	-	19/20	-	20/21	-

* Includes English 10, English: First Peoples 10 or Francais-Langue Premiere 10

CONTEXT

School District: 85 Vancouver Island North

1 Background

	Community	Province
Area Population	11,720	4,400,057 *
% Adults 55+ Yrs.	28	30 *
% Lone Parent Families	17	15 *
% < 19	31	27 *
# School Age	1,377	558,986
# Aboriginal On-Reserve	248	8,812
# Aboriginal Off-Reserve	309	53,951

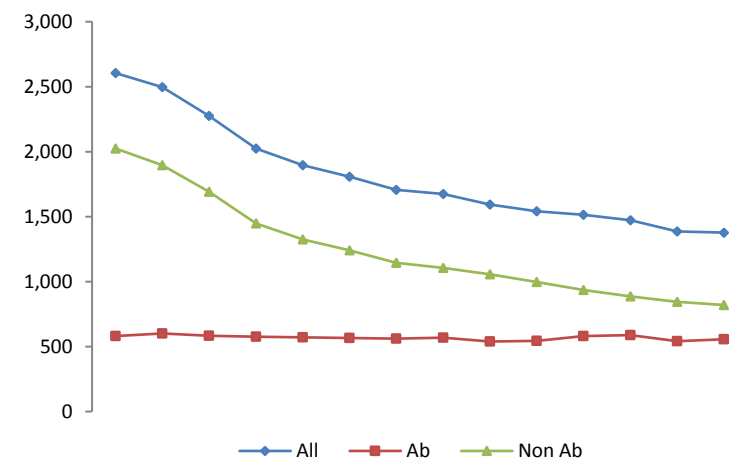
3 First Nations Traditional Territory



Kwakwaka'wakw – Kwakiutl Band Council, Mamalilikulla-Qwe'Qwa'Sot'Em Band, 'Namgis, Tlowitsis, Da'naxda,xw, Dzawada'enuxw, Kwikwasutinuxw Haxwa'mis, Gwawa'enuxw, Gwa'sala-'Nakwaxda'xw, Quatsino, Wuikinxw and Tlatlasikwala

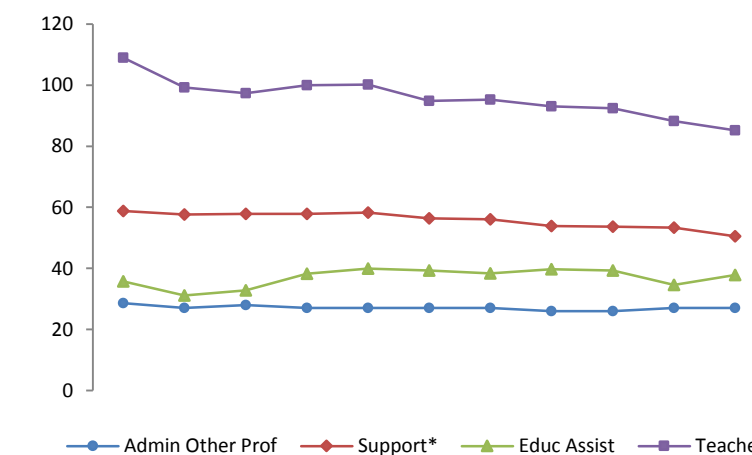
4 Student Counts

School Yr	All	Ab	Non Ab	Spec Needs
2000/01	2,605	580	2,025	197
2001/02	2,496	601	1,895	191
2002/03	2,274	583	1,691	194
2003/04	2,024	576	1,448	204
2004/05	1,896	572	1,324	180
2005/06	1,807	565	1,242	178
2006/07	1,706	560	1,146	190
2007/08	1,674	568	1,106	186
2008/09	1,594	539	1,055	176
2009/10	1,541	545	996	184
2010/11	1,515	580	935	166
2011/12	1,473	588	885	154
2012/13	1,386	541	845	133
2013/14	1,377	557	820	137



5 School and District Staff FTEs (at Sept 30)

School Yr	Prof ¹	Support ²	Educ Assist	Teachers
2003/04	28.6	58.8	35.8	108.9
2004/05	27.0	57.7	31.2	99.3
2005/06	28.0	57.8	32.8	97.4
2006/07	27.0	57.8	38.2	100.0
2007/08	27.0	58.3	40.0	100.2
2008/09	27.0	56.4	39.3	94.9
2009/10	27.0	56.0	38.4	95.3
2010/11	26.0	53.8	39.7	93.1
2011/12	26.0	53.6	39.3	92.4
2012/13	27.0	53.4	34.6	88.3
2013/14	27.0	50.5	37.8	85.2



¹ School executive & other excluded staff (incl. Board of Ed.)

² Clerical, cleaning, maintenance and bus drivers

* 2011 Census

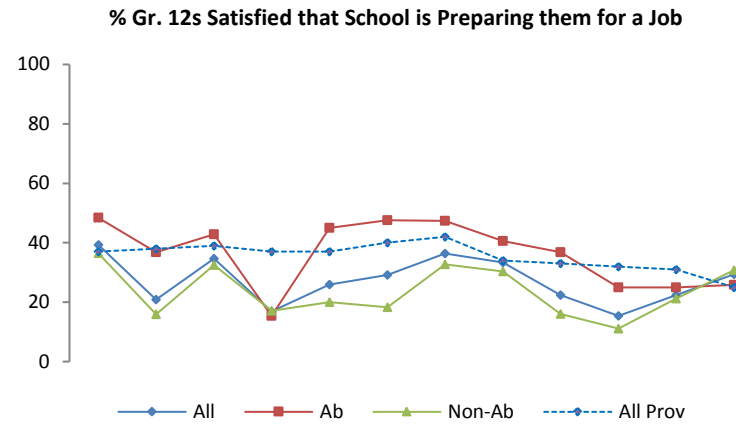
OUTCOMES (AT THE END OF 13 YEARS IN THE K-12 Program)

School District: 85 Vancouver Island North

6 Grade 12 Satisfaction (Percent Students Reporting "Many Times" or "All of the Time")

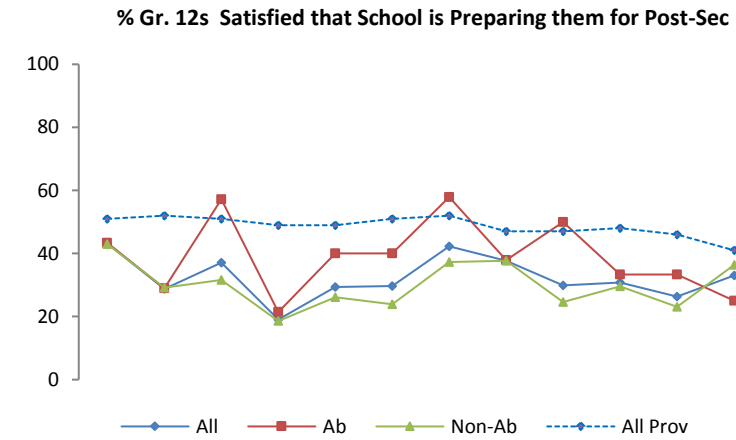
Preparation for a Job

School Yr	All	Ab	Non-Ab
2002/03	39	48	36
2003/04	21	37	16
2004/05	35	43	32
2005/06	17	15	17
2006/07	26	45	20
2007/08	29	48	18
2008/09	36	47	33
2009/10	33	41	30
2010/11	22	37	16
2011/12	15	25	11
2012/13	22	25	21
2013/14	29	26	31



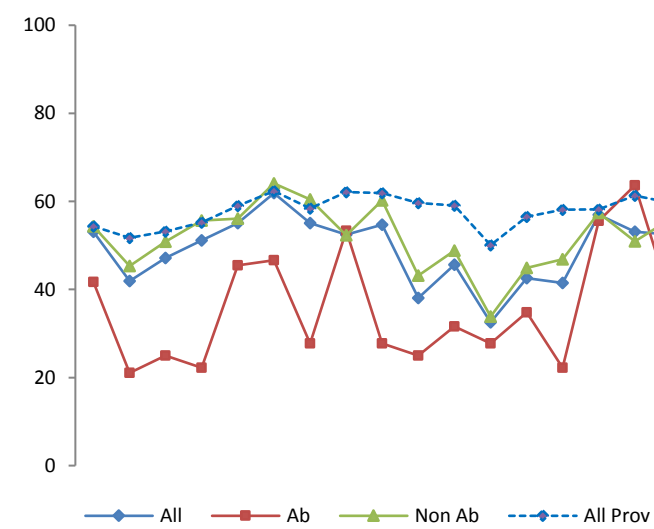
Preparation for Post-Secondary Transition

School Yr	All	Ab	Non-Ab
2002/03	43	43	43
2003/04	29	29	29
2004/05	37	57	32
2005/06	19	21	19
2006/07	29	40	26
2007/08	30	40	24
2008/09	42	58	37
2009/10	38	38	38
2010/11	30	50	25
2011/12	31	33	30
2012/13	26	33	23
2013/14	33	25	36



7 Grade 12 English* Exams (Percent C+ or Better) It is more likely that students who achieve C+ or higher will transition to post-sec.

School Yr	All	Female	Male	Ab	Non Ab	Spec Needs
1997/98	53	60	46	42	54	-
1998/99	42	54	31	21	45	0
1999/00	47	59	32	25	51	33
2000/01	51	61	40	22	56	0
2001/02	55	62	44	45	56	25
2002/03	62	64	60	47	64	75
2003/04	55	65	44	28	60	25
2004/05	52	53	52	53	52	0
2005/06	55	59	49	28	60	20
2006/07	38	30	52	25	43	20
2007/08	46	49	41	32	49	20
2008/09	33	38	27	28	34	33
2009/10	43	48	33	35	45	25
2010/11	41	44	39	22	47	20
2011/12	57	61	52	56	57	33
2012/13	53	58	46	64	51	0
2013/14	52	63	43	38	56	30



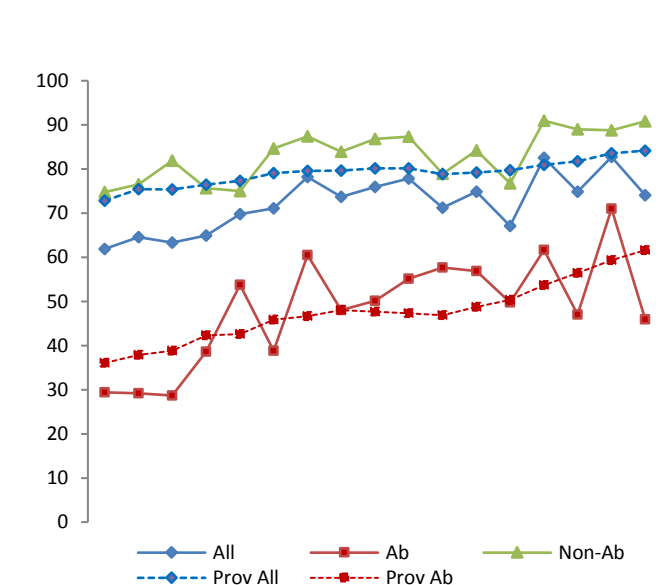
* Includes English 12, English: First Peoples 12 or Francais-Langue Premiere 12

OUTCOMES (AT THE END OF 13 YEARS IN THE K-12 Program)

School District: 85 Vancouver Island North

8 Six-Year Completion Rate

School Yr	All	Female	Male	Ab	Non Ab	Spec Needs
1997/98	61.9	63.3	60.4	29.4	74.8	100.0
1998/99	64.5	65.5	63.5	29.2	76.6	100.0
1999/00	63.3	62.1	64.2	28.7	81.9	33.1
2000/01	65.0	74.9	55.8	38.6	75.6	29.1
2001/02	69.8	74.1	66.1	53.8	75.0	54.8
2002/03	71.1	78.9	61.6	38.8	84.6	23.7
2003/04	78.2	81.2	75.2	60.5	87.4	64.8
2004/05	73.7	68.0	79.0	48.0	83.9	71.8
2005/06	75.9	78.7	73.7	50.1	86.8	46.0
2006/07	77.9	82.6	73.2	55.2	87.3	54.7
2007/08	71.3	76.7	65.8	57.7	79.0	57.5
2008/09	74.9	73.6	76.0	56.9	84.2	57.4
2009/10	67.1	74.8	61.7	49.8	76.7	46.0
2010/11	82.5	86.5	77.3	61.7	90.9	60.0
2011/12	74.8	70.3	78.5	47.0	89.0	56.8
2012/13	82.8	88.1	78.3	71.0	88.8	63.1
2013/14	74.1	69.8	78.2	46.0	90.8	59.5



9 Percent Value-Added

School Yr	All Students			Aboriginal Students		
	Re4 ME	6 Yr Comp	Value-Added	Re4 ME	6 Yr Comp	Value-Added
2009/10	49	66	17	33	47	14
2010/11	54	72	18	43	49	6
2011/12	53	70	18	35	39	4
2012/13	66	72	6	55	57	2
2013/14	51	73	22	33	50	17

A measure that examines a cohort of students who were in BC for both Grades 4 and 7. Their FSA Grade 4 Reading result of Meeting or Exceeding expectations is subtracted from their six-year completion result, thus providing a result of the value-added to their educational program since Grade 4.

10 Percent All Students Transitions to BC Public Post-Secondary

K-12 Grad Yr	Post-Sec Entry Year						Post-Sec Entry
	2008/09	2009/10	2010/11	2011/12	2012/13	2013/14	
2007/08	41.7	20.5	3.1	2.4	3.9	2.4	→ % within 6 Yrs 74.0
2008/09		35.9	17.1	6.0	3.4	0.9	→ % within 5 Yrs 62.4
2009/10			42.3	11.4	5.7	2.4	→ % within 4 Yrs 61.8
2010/11				49.1	5.2	0.9	→ % within 3 Yrs 55.2
2011/12					44.8	5.7	→ % within 2 Yrs 50.6
2012/13						30.4	→ % Immediate 30.4

Does not include students enrolled in developmental or Adult Basic Ed programs.

Below prov rate (red box) Above prov rate (green box)

** Public Schools Only